

# NaveniFlex™

REINVENTING FLUORESCENCE-BASED IMMUNOSTAINING

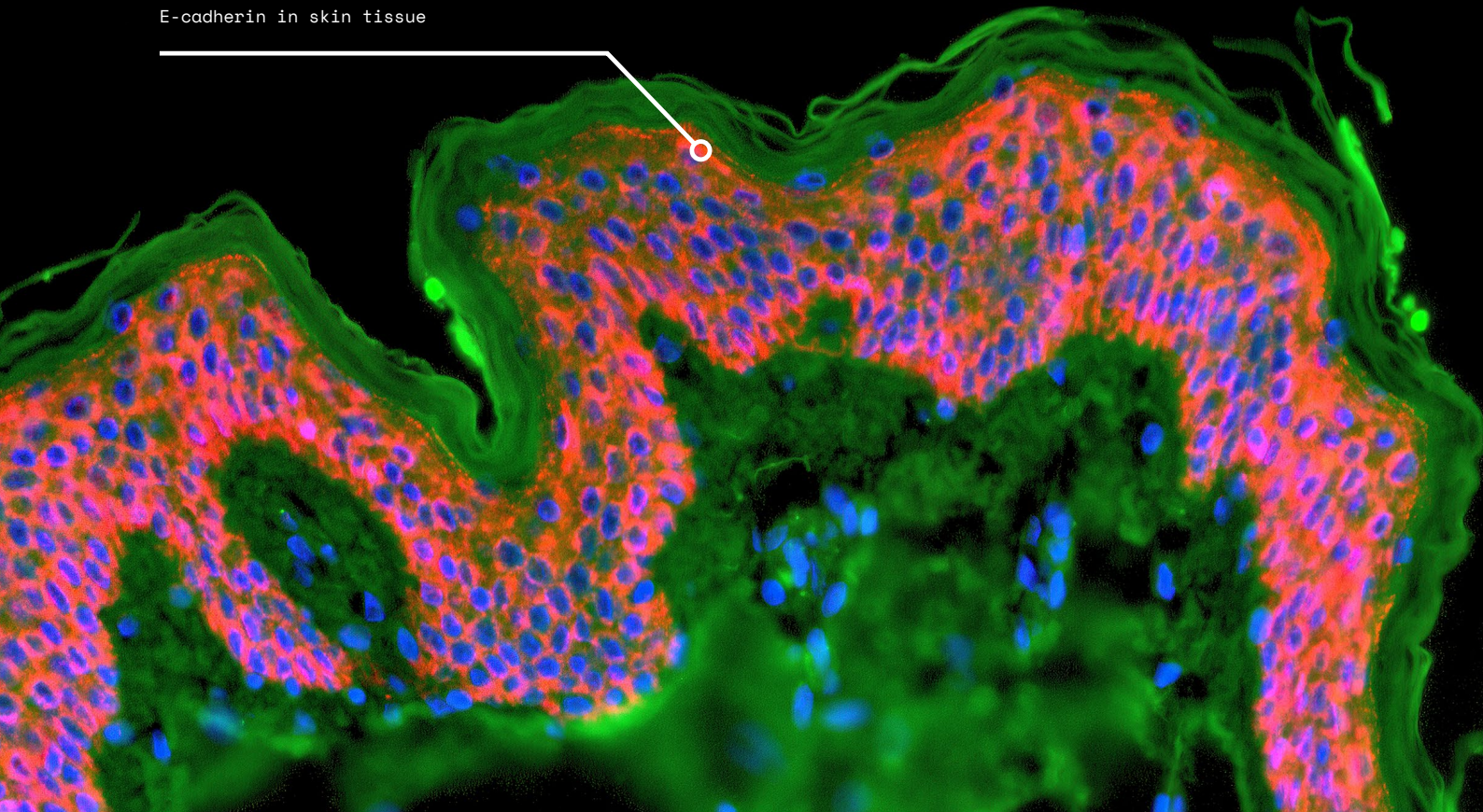
## Maximize information from every cell and tissue sample

Navenibodies in the NaveniFlex technology significantly enhances the fluorescent signal, providing you with stronger and more accurate staining.

## NaveniFlex™ enables you to:

- Study very low abundant protein targets
- Detect proteins, PPIs, and PTMs
- Digitally quantify *in situ* results
- Save precious antibodies
- Work with highly autofluorescent tissues

Protein interaction of beta-catenin and E-cadherin in skin tissue



## Compatible with established in situ workflows

Obtain distinct signals with NaveniFlex's streamlined workflow

Review and capture images using a fluorescent microscope

Perform digital quantification with imaging software

FOR MORE INFORMATION OR TO PLACE ORDER, VISIT [WWW.NAVINCI.SE/PRODUCTS](http://WWW.NAVINCI.SE/PRODUCTS)

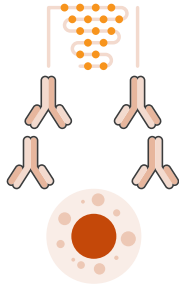
Email: [contact@navinci.se](mailto:contact@navinci.se)



# The Naveni™ product family

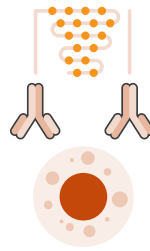
The NaveniFlex™ kits contain Navenibodies, enzymes for digestion, ligation and amplification and three fluorophore alternatives (Atto488, TEX615, and Atto647N). This allows you to choose the fluorophore most suitable for your microscope and assay.

## NaveniFlex™ MR, GR or GM



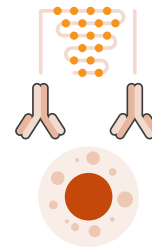
Detects proximity between Mouse/Rabbit/Goat primary antibody pairs.

## NaveniFlex™ MM



Detects single Mouse primary antibodies.

## NaveniFlex™ RR



Detects single Rabbit primary antibodies.

### Included in the kit

- Detection reagents
- Navenibodies for secondary detection

### Provided by the user

- Primary antibodies
- Cells/tissue

### Ordering information

Product Name	Product Code	Size*
NaveniFlex™ MR	NF.MR.100	4mL working solution
NaveniFlex™ GM	NF.GM.100	4mL working solution
NaveniFlex™ GR	NF.GR.100	4mL working solution
NaveniFlex™ RR	NF.RR.100	4mL working solution
NaveniFlex™ MM	NF.MM.100	4mL working solution
NaveniFlex Control Kit	NF.CK.100	3 control slides

\*1 reaction is calculated on 40  $\mu$ L of reagents to cover 1 square cm



FOR MORE INFORMATION OR TO PLACE ORDER, VISIT [WWW.NAVINCI.SE/PRODUCTS](http://WWW.NAVINCI.SE/PRODUCTS)

Email: [contact@navinci.se](mailto:contact@navinci.se)